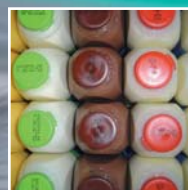
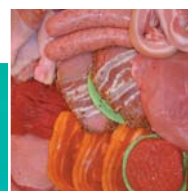
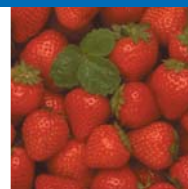
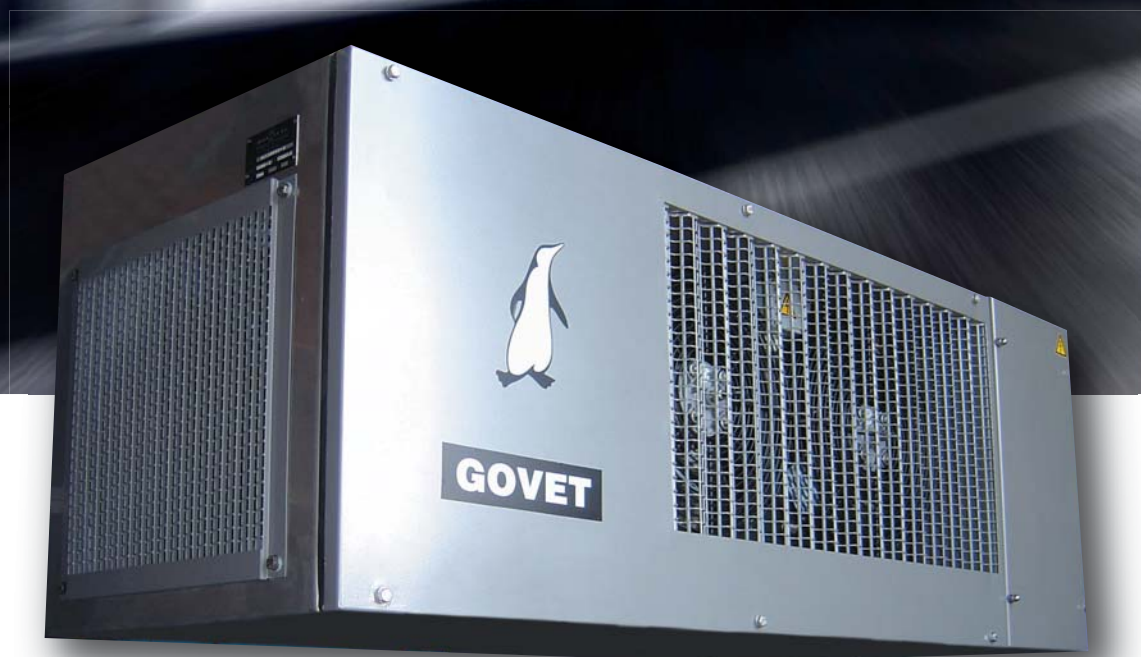


YOUR CLIMATECONTROLLER



GOVET POWER Series



Transportkoeling

Govers  **e.t. b.v.**



YOUR CLIMATECONTROLLER

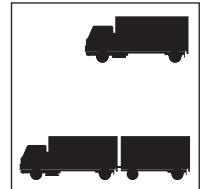
GOVERS E.T. B.V

For over thirty years Govers e.t. b.v. has specialized in developing and producing high quality refrigerating, freezing and heating installations for transport and industry. Within the various departments for developing and production, the extensive product range is constantly improved, whereby important aspects such as quality and environmental awareness are a high priority. Also, a 24 hours service is offered to ensure that possible urgent problems can be solved both quickly and effectively by qualified mechanics. Govers e.t. b.v. is a modern and customer oriented organization with skilled and involved employees.

GOVET POWER Series

These transport refrigerating installations are electrically driven by a GOVET generator, which is driven by means of the combustion engine in the vehicle.

The POWER Series are specifically designed for underneath mounting on trailers and truck box bodies and is suited for bodies up to 60 m³. The units are fitted with a flat, ceiling mounted evaporator and have electrical defrosting and heating. Besides running on the combustion engine of the vehicle, the units are also equipped with a 400 Volts night cooling for operation on the electrical grid. With a maximum sound emission of 55 dB(A) all POWER units meet the strict requirements of the PIEK regulation for distribution during night time.



GOVET

DESCRIPTION

- FRAME**..... The frame is a self supporting construction, specially designed for underneath mounting, made of stainless steel, fitted with a grey coating and aluminium cover.
- AIR COOLER**..... A flat ceiling evaporator, fitted with ventilators, aluminium casing and a drip-tray with defrosted water drain.
- GENERATOR**..... Solid carbon brushless generator with a power of 15 kVA. Standard equipped with advanced operating electronics, by which the generator is protected against an overload.
- FREQUENCY**..... This regulator ensures that the output frequency is always constant on 50 Hz from approx.
- REGULATOR** 1.000 rounds per minute of the combustion engine. Because of this the transport refrigerator supplies its maximum refrigerating power for the majority of the round per minute range.
- COMPRESSORS**..... Semi hermetically closed refrigerating compressors, in several power classes.
- SWITCHBOX**..... A fully automatic control unit is fitted in the slide out switch box.
- OPERATION**..... Remote control in the cabin, equipped with an electronic thermostat with digital temperature reading and operating switches.
- REFRIGERANTS**..... The units are supplied standard with an environmental-friendly refrigerant R 404A.
- SOUND LEVEL**..... The maximum sound level of this unit is officially fixed at 55 dB(A).

SPECIFICATIONS

	POWER 4	POWER 5
Measurements	L = 590 mm B = 1.650 mm H = 590 mm	L = 590 mm B = 1.650 mm H = 590 mm
Combined weight unit	270 kg	300 kg
Generator weight	64 kg	64 kg
Refrigerating power (0°C / +30°C)	7.800 Watt	10.500 Watt
Freezing power (-20°C / +30°C)	4.250 Watt	5.100 Watt
Heating capacity	3.800 Watt	4.100 Watt
Air production m ³ /hour	3.525	4.700
OPTIONS		
CS-PTO drive	0	0
Multi temperature edition (several possibilities)	0	0
Temperature registration	0	0

Transportkoeling

Govers  **e.t. b.v.**

Industriestraat 26
4861 PR Chaam
Postbus 41
4860 AA Chaam

T +31 (0) 161 49 22 51
F +31 (0) 161 49 24 54
I www.goverset.nl
E info@goverset.nl